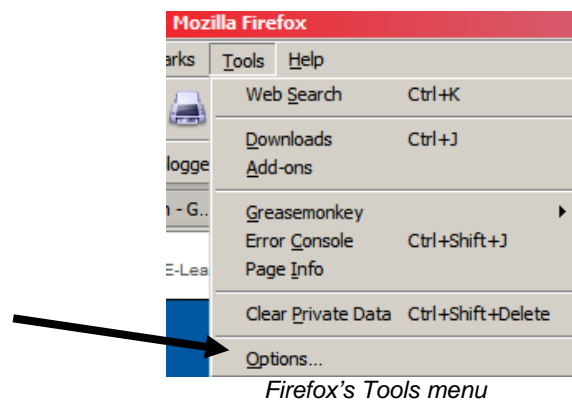


## Fact Sheet

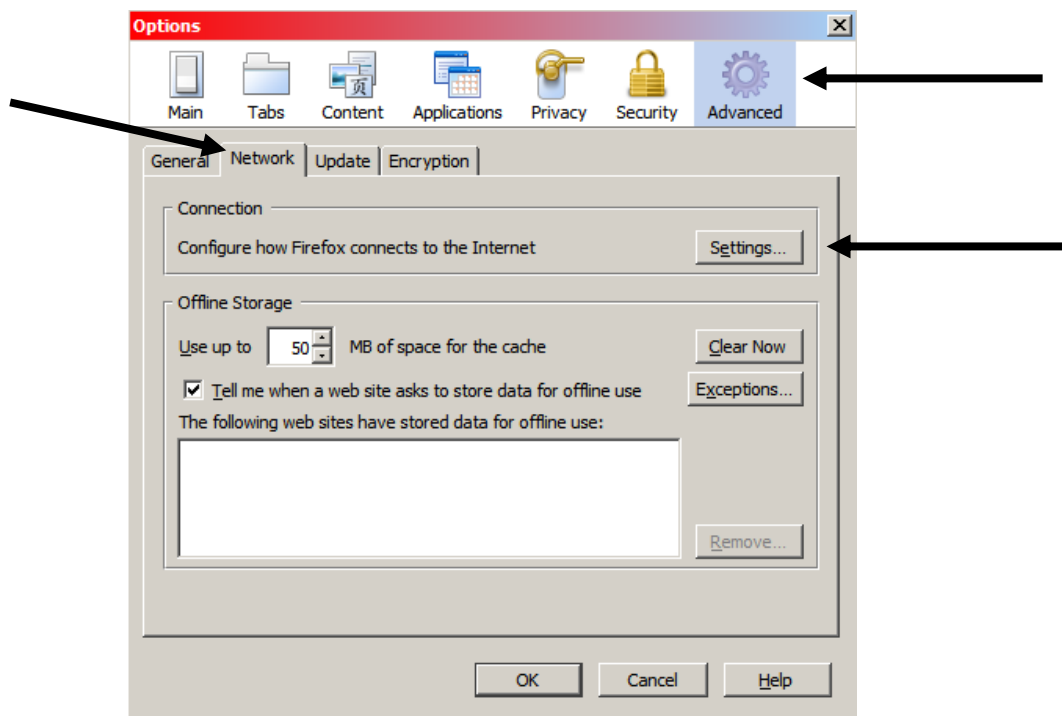
### UWS Proxy Settings for Firefox (PC)

**Note:** Recent versions of Netscape and Mozilla will be very similar. Firefox, Netscape and Mozilla are not supported at UWS. Screen shots are from Firefox 3.0.8.

Open **Firefox**.

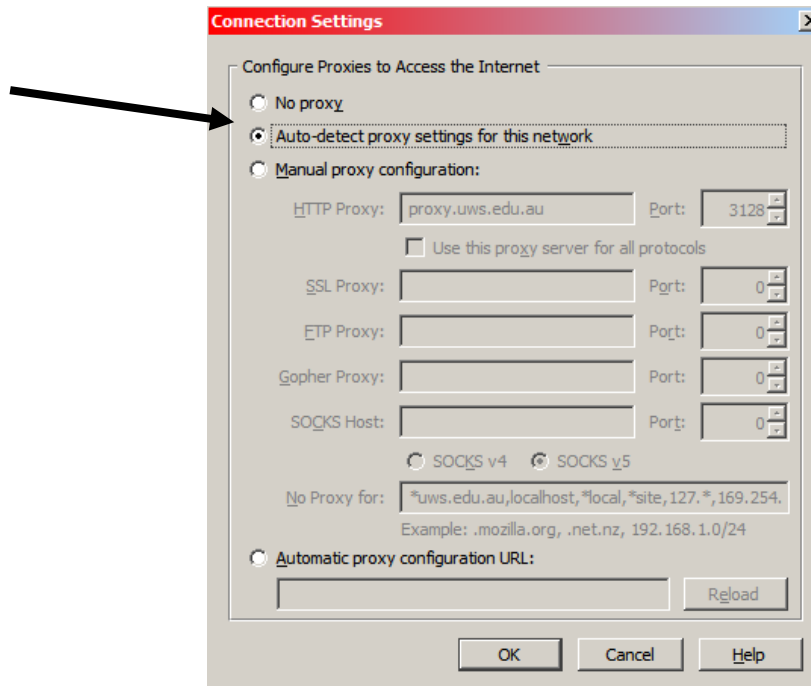


From the **Tools** menu, choose **Options...** The Options window will appear.



Select the **Advanced** icon. Click the **Network** tab, then the **Settings...** button to open the connection settings window.

## Fact Sheet



*Auto-detect must be checked*

Ensure **Auto-detect proxy settings for this network** is checked. Press **OK** to close the Connection Settings window. Press **OK** to close the Options window.

You have now configured Firefox to use the UWS proxy server.

### Off-campus settings

Use the settings recommended by your Internet Services Provider.

### Manual proxy

Manually setting your browser's proxy configuration is no longer recommended or supported at UWS. **Undertake at your own risk.**

In order to receive updates, some software may require users to enter proxy details into the software itself. The settings will apply to that software only, and you should continue to use the browser settings recommended above.

Proxy address: **proxy.uws.edu.au**

Port: **3128**

If required, enter you user name and password where indicated.