

This fact sheet describes connecting to **AirUWS-Lite** (the University's primary wireless network) with Windows 7. AirUWS-Lite is much easier to connect to, and is compatible with more equipment than the older AirUWS network, which remains available.

It has been assumed that readers will be familiar with using Windows 7.



Your use of AirUWS-Lite is subject to the University's IT Acceptable Use of Resources Policy.

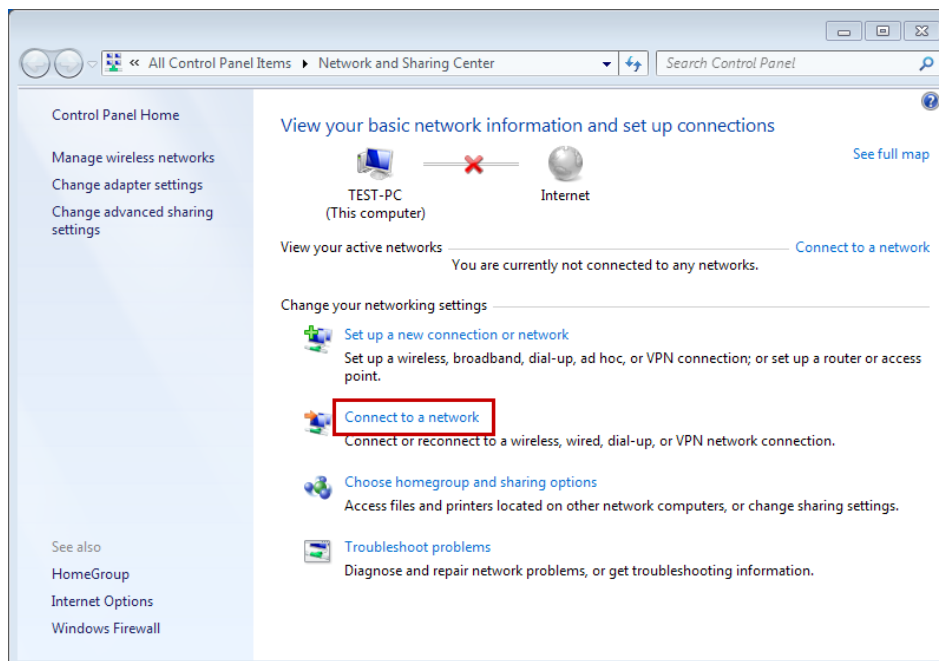
Connecting

Turn on your wireless hardware. Right click the wireless network icon in your system tray, and select **Open Network and Sharing Center** from the menu that appears.



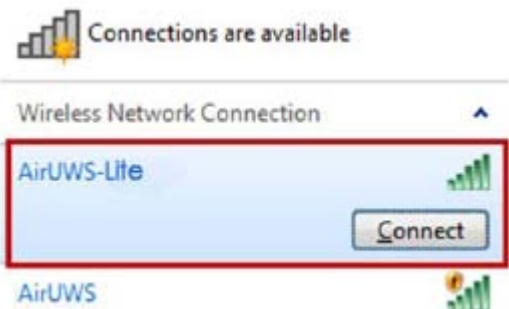
Right click the system tray's wireless network icon

Click **Connect to a Network** when the Network and Sharing Center opens.

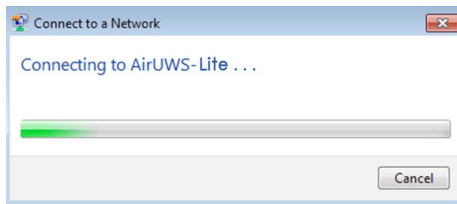


Click **Connect to a network**

Available networks are displayed. Select **AirUWS-Lite** and press **Connect**.



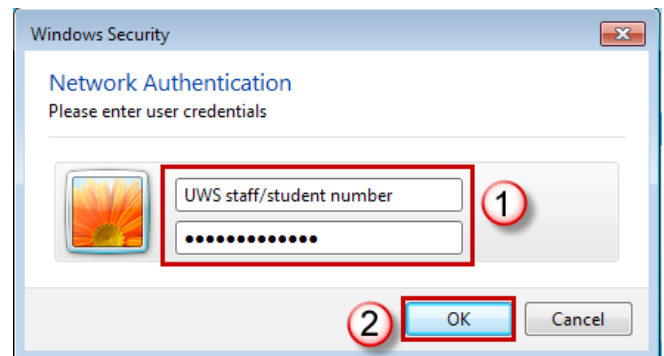
After a short connection time...



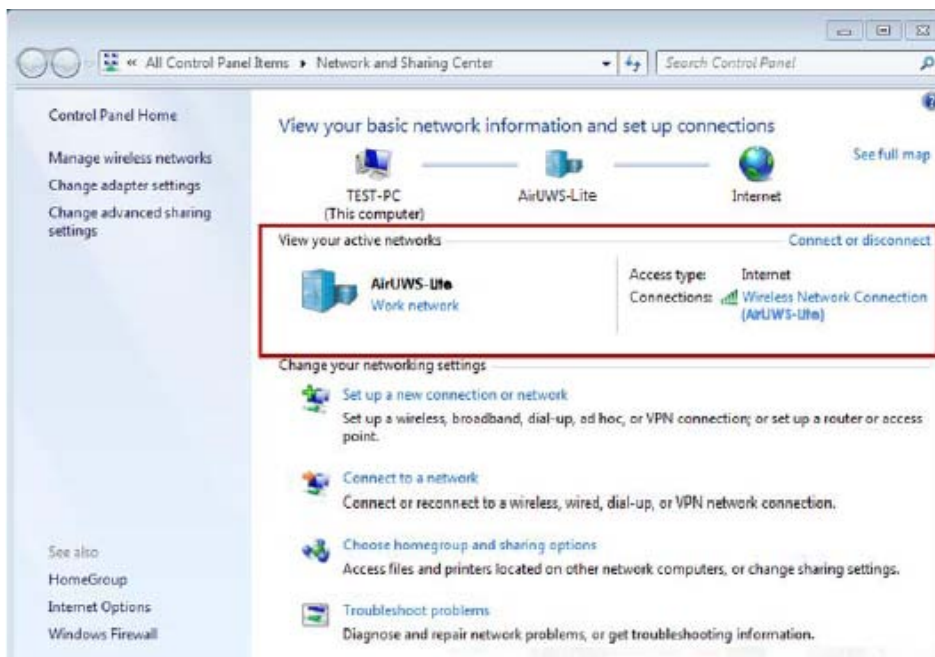
Connecting...

Press Connect

You will be prompted for your user name and password. Enter your MyUWSAccount credentials and press **OK**.



Enter your MyUWSAccount credentials (1) and press OK (2)



AirUWS-Lite is now active

The Network and Sharing Center now shows AirUWS-Lite as an active network.

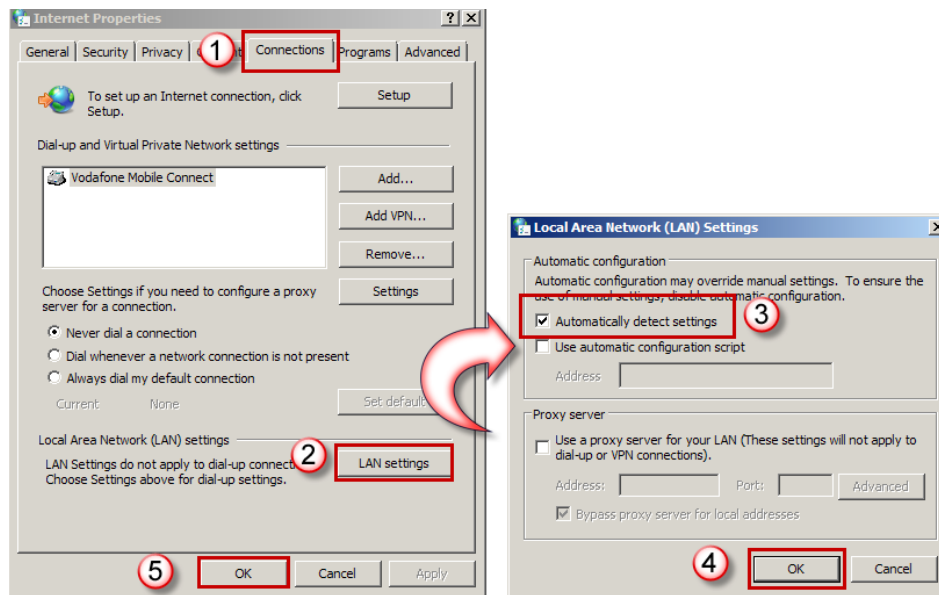
Proxy Settings



You will need to set the proxy settings before accessing the web. Open Windows **Control Panel**. Double click the **Internet Options** icon. The Internet Properties window opens.

Select the **Connections** tab (1), and press the **LAN settings** button (2). The LAN Settings window opens.

Tick **Automatically detect settings** (3) and press **OK** (4). Press **OK** (5) again.



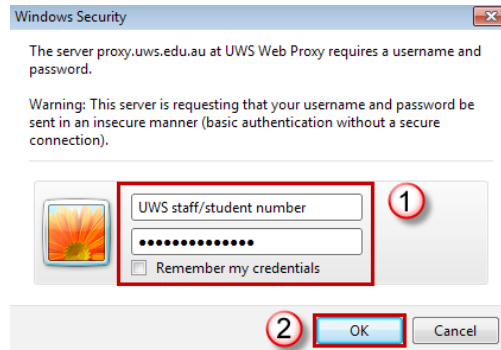
*Check you are using the correct proxy settings
(Note: this image is from Vista, Windows 7 is similar)*



For non-UWS use, you may need to reset the proxy settings to those recommended by your Internet Services Provider.

Access the Web

When you open Internet Explorer you will be prompted for your username and password again. Enter your **MyUWSAccount credentials** (1) and press **OK** (2).



Enter your MyUWSAccount credentials again

You can now use the web normally. **Note:** If you open a new browser window you will be prompted for your username and password again. Enter your MyUWSAccount credentials and press **OK**.



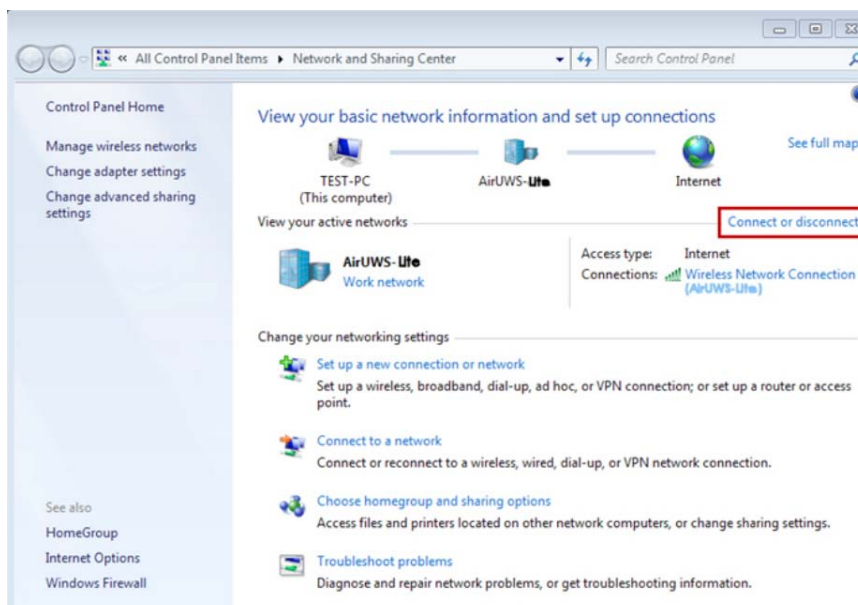
Be aware that some auto-updating programs (eg, antivirus and Windows Updates) are unable to update via AirUWS-Lite – be sure to continue to connect outside of AirUWS-Lite to receive these important updates.

Disconnecting

Log out of any open sites or services.

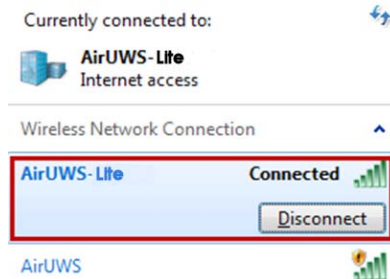
Turn your wireless hardware off.

Alternatively, open your **Network and Sharing Center** and click **Connect or Disconnect**.



Click Connect or Disconnect

The available networks will open, showing that you are connected to AirUWS-Lite. Select **AirUWS-Lite** and press **Disconnect**.



Press the Disconnect button



IT Service Desk	
Phone:	02 9852 5111 (ext 5111)
Email:	itservicedesk@uws.edu.au
Web:	http://www.uws.edu.au/itservicedesk
Self Service job logging:	http://itsm.uws.edu.au
UWS IT Services Catalogue:	http://www.uws.edu.au/its
ITS Fact Sheets	http://www.uws.edu.au/itfactsheets