

AirUWS-Lite is the University's primary wireless network. This fact sheet describes connecting to AirUWS-Lite using Mac OS 10.6.4 (or later).

AirUWS-Lite is much easier to connect to, and is compatible with more equipment than the older AirUWS network (which remains available). It is assumed that readers will be familiar with using Mac OS 10.6.4.

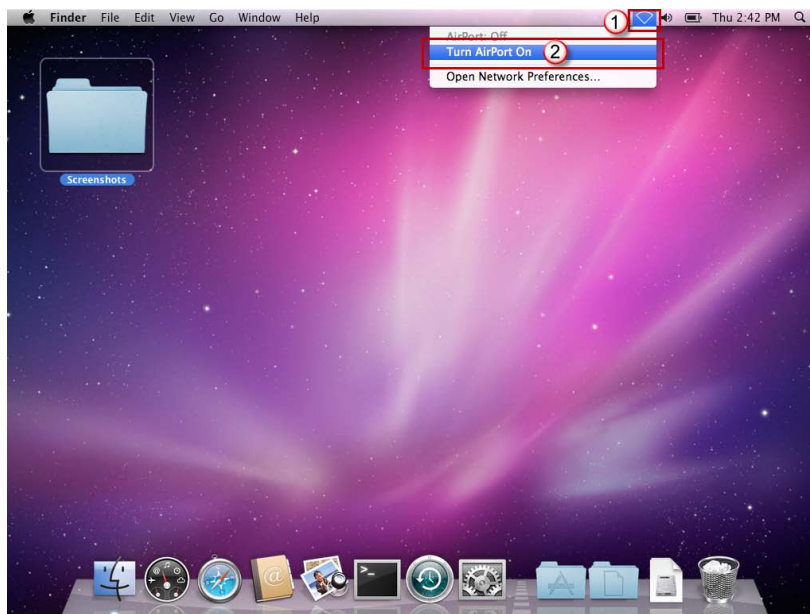
This fact sheet has been tested with Mac OS 10.6.4. In testing, it was found that older versions of Mac OS could not connect until they updated to 10.6.4. While you may be able to connect with older versions, ITS recommends upgrading to 10.6.4 or later.



Your use of AirUWS-Lite is subject to the University's [IT Acceptable Use of Resources Policy](#).

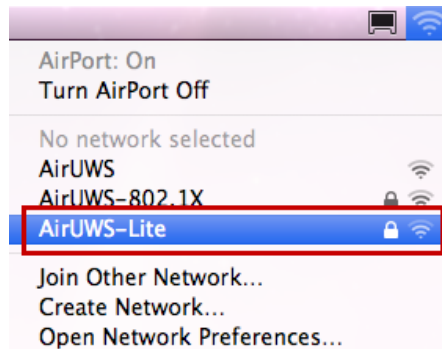
Connecting

Click the **wireless network icon** and select **Turn AirPort On** from the menu.



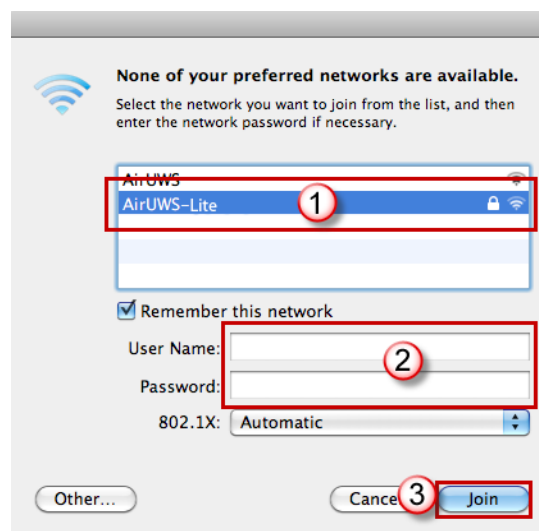
Click the wireless icon (1) and select Turn Airport On (2)

Note: The first time you connect to AirUWS, you will need to click the wireless icon again, and select AirUWS-Lite. Next time you start AirPort at UWS, your Mac should remember the network and go straight to the log in screen. If you did not disconnect from the network last time, you **may** be automatically connected without being asked to login, depending on how long you have been disconnected.



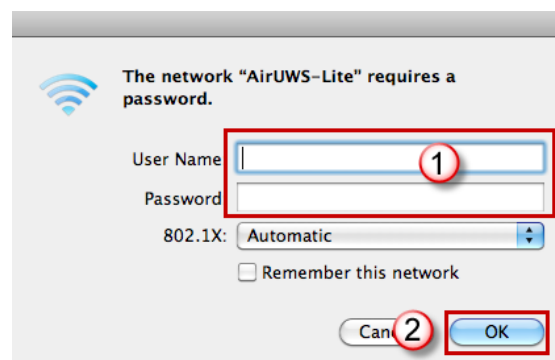
Select AirUWS-Lite

Once AirPort is turned on, one of the following windows appears. Select **AirUWS-Lite**. The User Name and Password fields appear. Enter your **MyUWSAccount** login credentials and press **Join** or **OK**.



Select AirUWS-Lite (1), enter your MyUWSAccount credentials (2) and press Join (3)

Or...



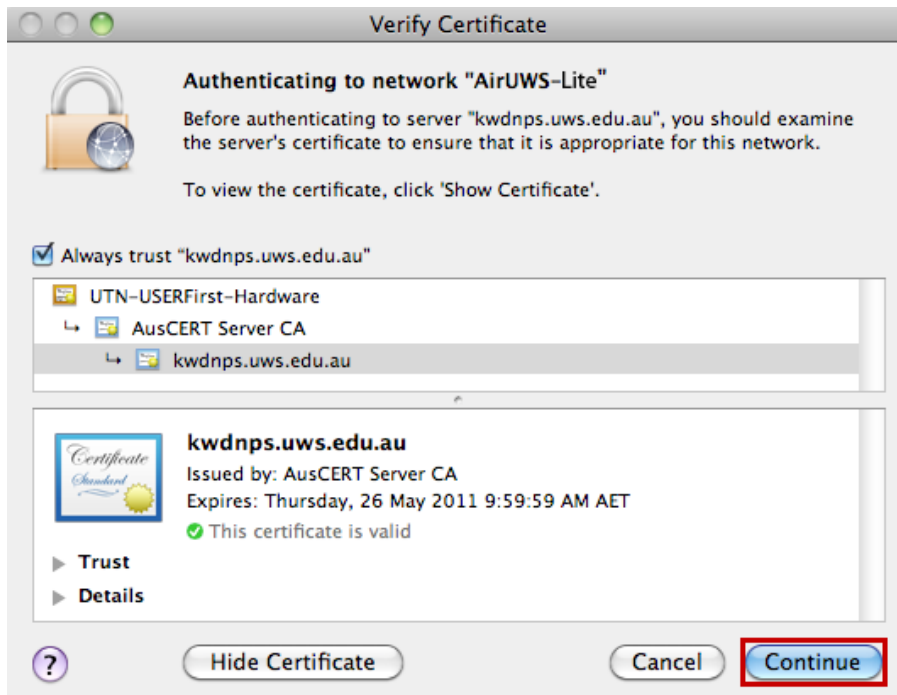
...enter your MyUWSAccount credentials (1) and press OK (2)

The following certificate verification may appear. Press **Continue**.



Press Continue

If the following window appears, press **Continue** again.



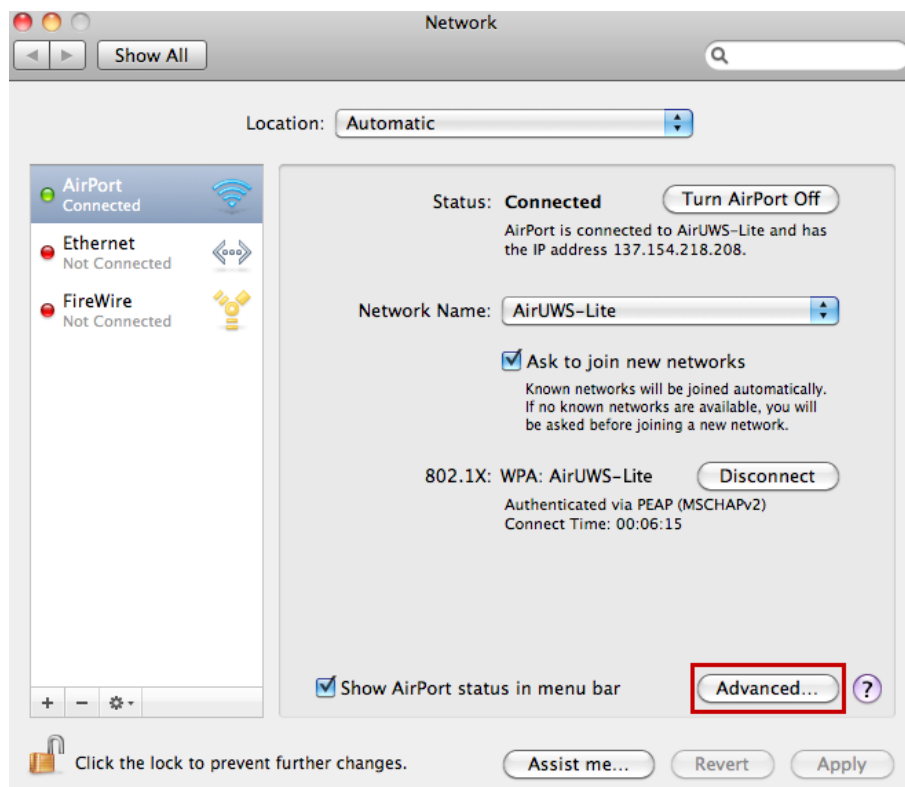
Press Continue

Enter your Mac's local Root or Administrator **user name** and **password** and press **OK**. **Note:** this is NOT your MyUWSAccount username and password. If your regular Mac login has administrator access, you should be able to use that login. This step should only be required the first time you connect to AirUWS-Lite.



Enter your Mac's admin user name and password (1) and press OK (2)

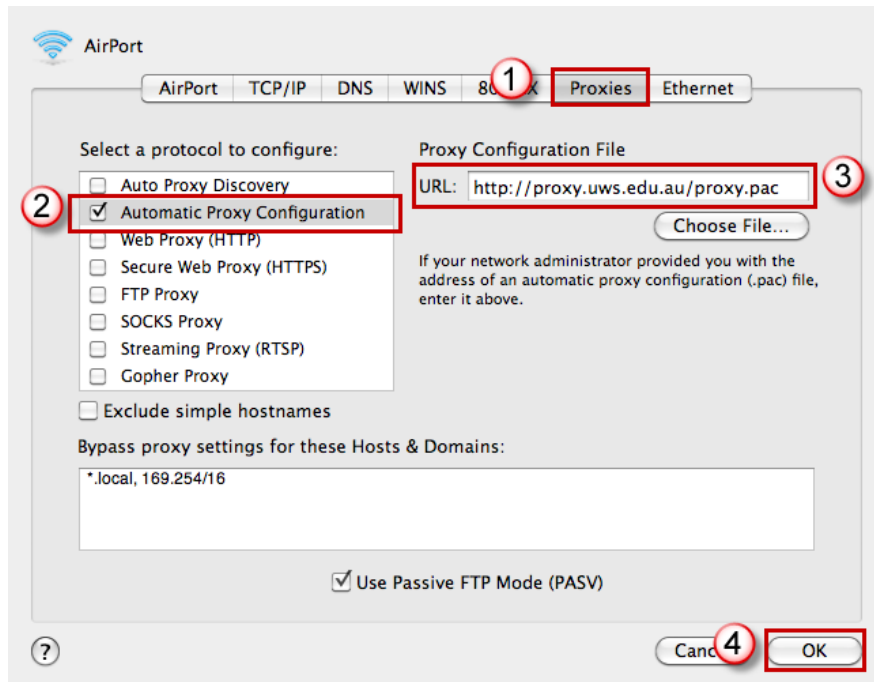
Click the wireless network icon again and select **Open Network Preferences...** The Network window will show that you are connected to AirUWS-Lite. Press **Advanced** to adjust the proxy settings. The AirPort window opens.



The network window shows that you are connected to AirUWS-Lite – press Advanced

Proxy Settings

Click the **Proxies** tab. Tick **Automatic Proxy Configuration**. Enter **http://proxy.uws.edu.au/proxy.pac** in the URL field and press **OK**. The AirPort window closes. Click **Apply** and then close the Network window.

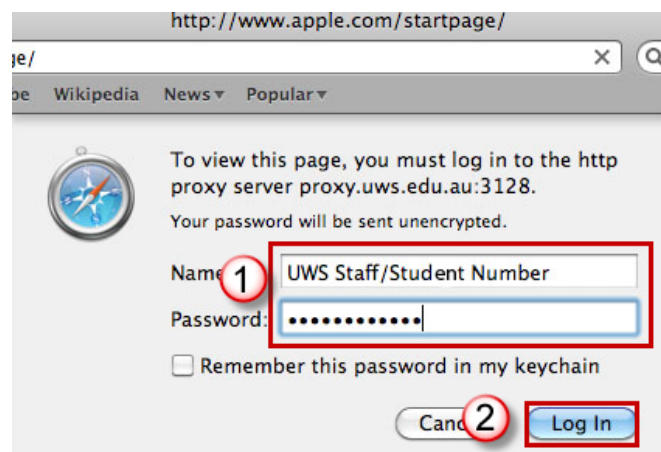


Click Proxies(1), tick Auto Proxy Configuration (2), enter URL (3) and press OK (4)

For non-UWS use, you may need to reset the proxy settings to those recommended by your Internet Services Provider.

Access the Web

Open Safari. You will be prompted for your name and password. Enter your MyUWSAccount credentials and press **Log In**.



Enter your MyUWSAccount credentials (1) and press Log In (2)

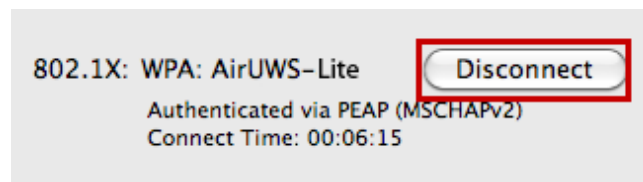
Note: If you are prompted for your username and password again, enter your MyUWSAccount credentials and press **Log In**.



Be aware that some auto-updating programs (eg, antivirus and Windows updates) are unable to update via AirUWS-Lite – be sure to continue to connect outside of AirUWS-Lite to receive these important updates.

Disconnecting

Turn your wireless hardware off. Alternatively, click the **wireless network icon** and select **Open Network Preferences**. Press **Disconnect**.



More information

AirUWS on the web – <http://www.uws.edu.au/wireless>



IT Service Desk	
Phone:	02 9852 5111 (ext 5111)
Email:	its servicedesk@uws.edu.au
Web:	http://www.uws.edu.au/its servicedesk
Self Service job logging:	http://itsm.uws.edu.au
UWS IT Services Catalogue:	http://www.uws.edu.au/its
ITS Fact Sheets	http://www.uws.edu.au/itfactsheets