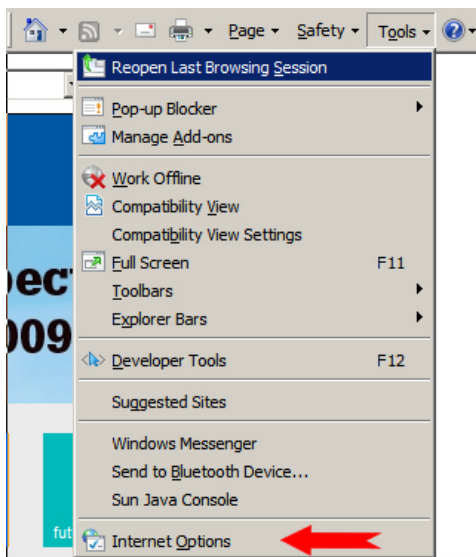


Fact Sheet

UWS Proxy Settings for Internet Explorer (PC)

These instructions will work with Internet Explorer 6, 7 and 8, although there may be slight differences in menu location and window appearance.

Open **Internet Explorer**.



Internet Explorer 8's Tools menu

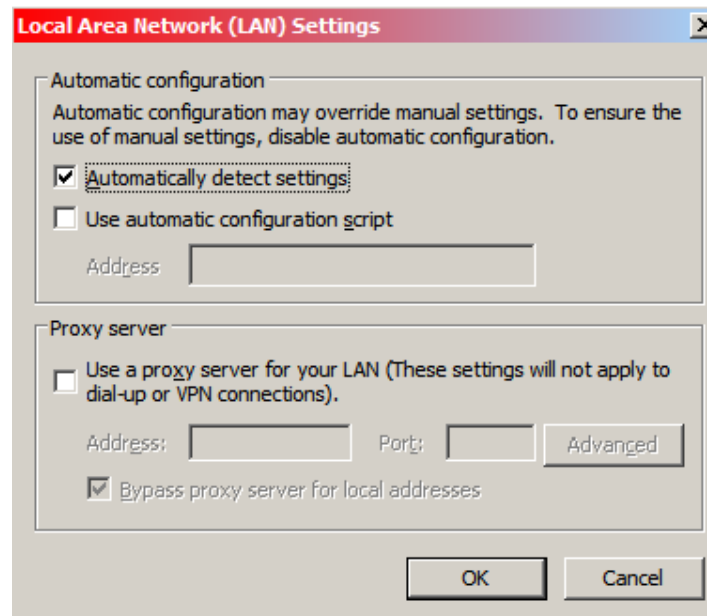
From the **Tools** menu, choose **Internet Options**. A tabbed window will appear. Click the **Connections** tab.

On the **Connections** tab, click the **LAN settings... button** and the LAN settings window will appear.



On the Connections tab, choose LAN Settings...

Fact Sheet



Ensure **Automatically detect settings** is ticked

Ensure **Automatically detect settings** is ticked. Press **OK** to close the LAN Settings window. Press **OK** again to close the Internet Options window. You have now configured Internet Explorer to use the UWS proxy server.

Off-campus settings

Use the settings recommended by your Internet Services Provider. The UWS proxy server cannot be used off-campus.

Manual proxy

Manually setting your browser's proxy configuration is no longer recommended or supported at UWS. Undertake at your own risk.

In order to receive updates, some software may require users to enter proxy details into the software itself. The settings will apply to that software only, and you should continue to use the browser settings recommended above.

Proxy address to use: **proxy.uws.edu.au**
Port: **3128**

If required, enter you user name and password where indicated.